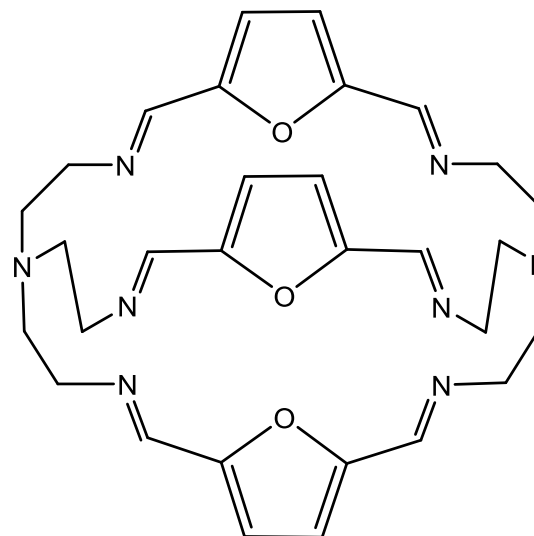
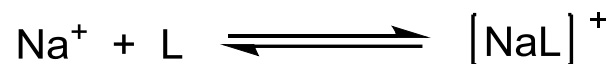


## (6) Applications – digression into dynamics: lineshape

- **Na-23** ( $I = 3/2$ , n.a. 100%)
- **Na-23** ( $\gamma = 7.1$ ) vs. **C-13** ( $\gamma = 6.7$ )  $[\times 10^7 \text{ T}^{-1}\text{s}^{-1}]$
- Supramolecular complexation



McKee, *J.Chem.Soc., Chem.Commun.* **1992**, 383.

## (6) Applications – digression into dynamics: lineshape

