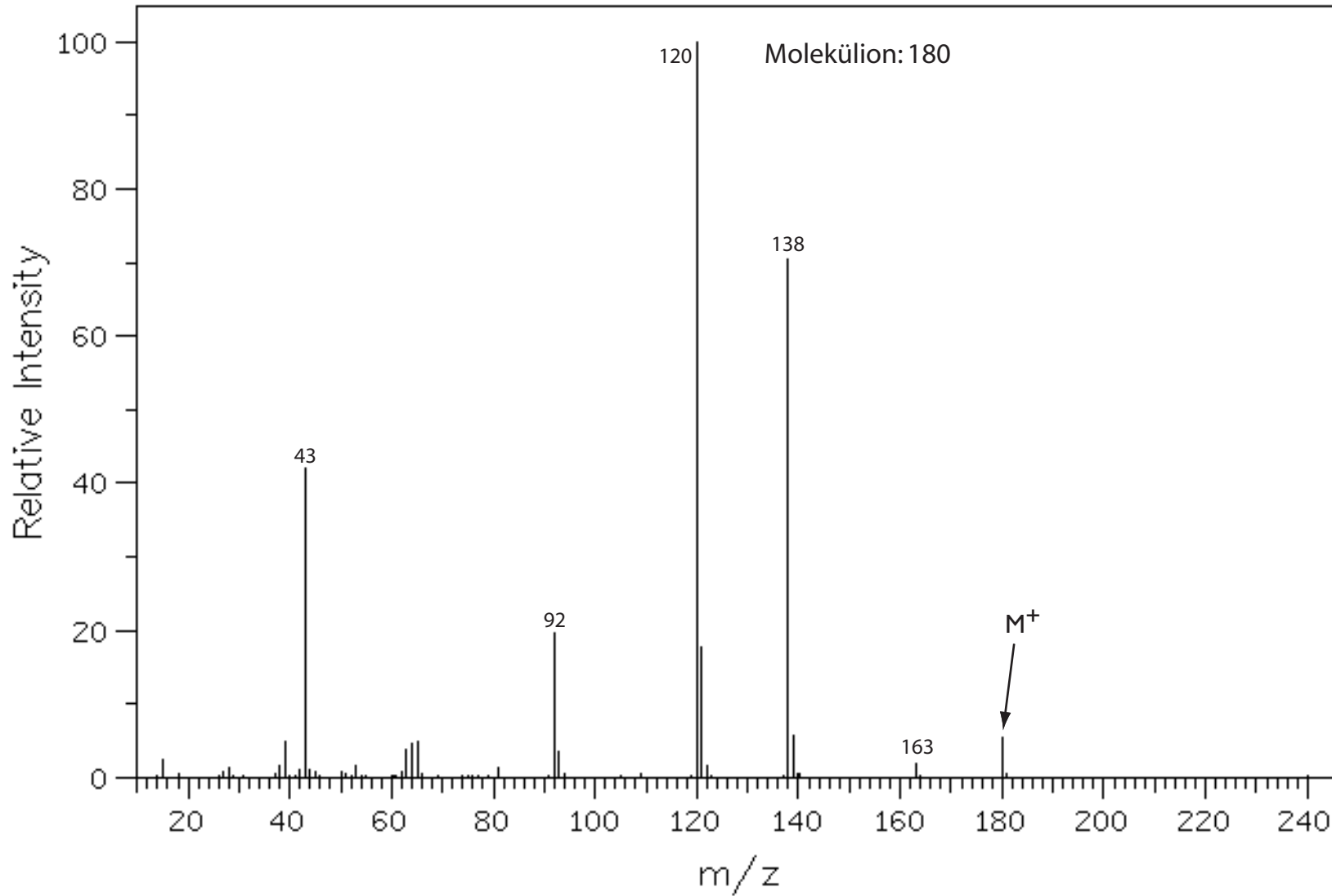


Beispiel 4 (bonus)

(1) Massenspektrum (EI)



15.0	2.3
28.0	1.2
38.0	1.5
39.0	5.0
42.0	1.1
43.0	42.1
44.0	1.0
53.0	1.6
63.0	3.9
64.0	4.6
65.0	4.9
81.0	1.3
92.0	19.5
93.0	3.5
120.0	100.0
121.0	17.6
122.0	1.5
138.0	70.5
139.0	5.6
163.0	1.8
180.0	5.3

Source Temperature: 170 °C
Sample Temperature: 100 °C