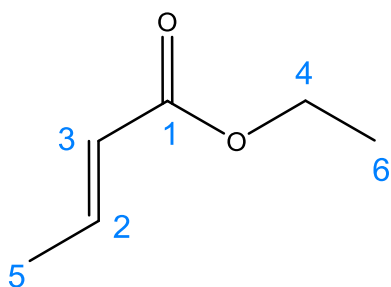


## Assignment Table



<sup>13</sup> C Signals	Type of Carbon	Assignment	Proton signals	J <sub>HH</sub> [Hz]
166.5	C <sub>q</sub>	C-1		
122.7	CH	C-2	6.96	15.5, 6.9
144.4	CH	C-3	5.82	15.5, 1.7
60.1	CH <sub>2</sub>	C-4	4.16	7.1
17.9	CH <sub>3</sub>	C-5	1.27	6.9, 1.7
14.2	CH <sub>3</sub>	C-6	1.86	7.1