

**Massenspektrometrie (2):**

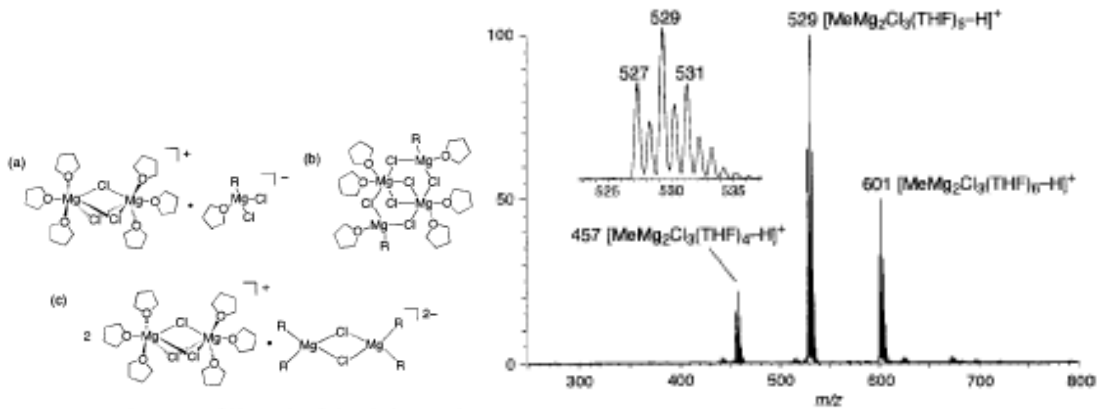


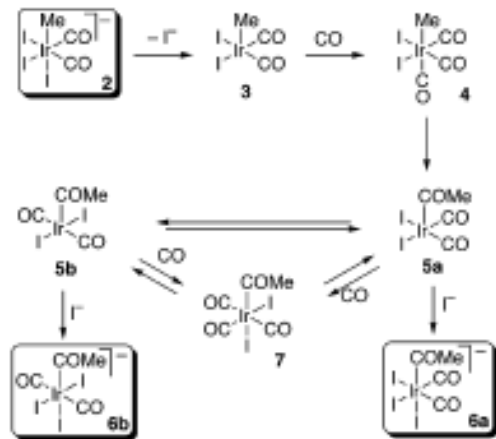
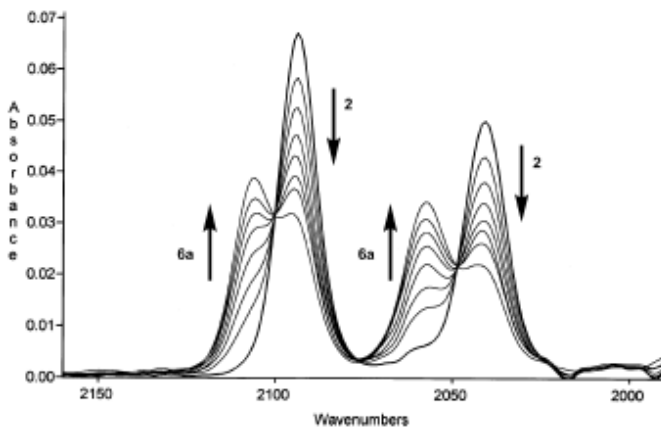
Figure 1. Crystal structures of (a) [Mg<sub>2</sub>(μ-Cl)<sub>2</sub>(THF)<sub>6</sub>]<sup>+</sup>·[RMgCl<sub>2</sub>(THF)<sub>2</sub>]<sup>-</sup>, (b) R<sub>2</sub>Mg<sub>2</sub>Cl<sub>2</sub>(THF)<sub>6</sub>, and (c) [2Mg<sub>2</sub>(μ-Cl)<sub>2</sub>(THF)<sub>6</sub>]<sup>+</sup>·[R<sub>4</sub>Mg<sub>2</sub>Cl<sub>2</sub>]<sup>2-</sup>.

Figure 5. CSI-MS spectrum of MeMgCl in THF solution.

[K. Yamaguchi, *Org.Lett.* 2001, 3, 1793-5; Grignard constitution]

**IR-Spektroskopie:**

**CO-Banden**



[G. Morris, *JACS* 2004, 126, 2847-61; Carbonylierung]